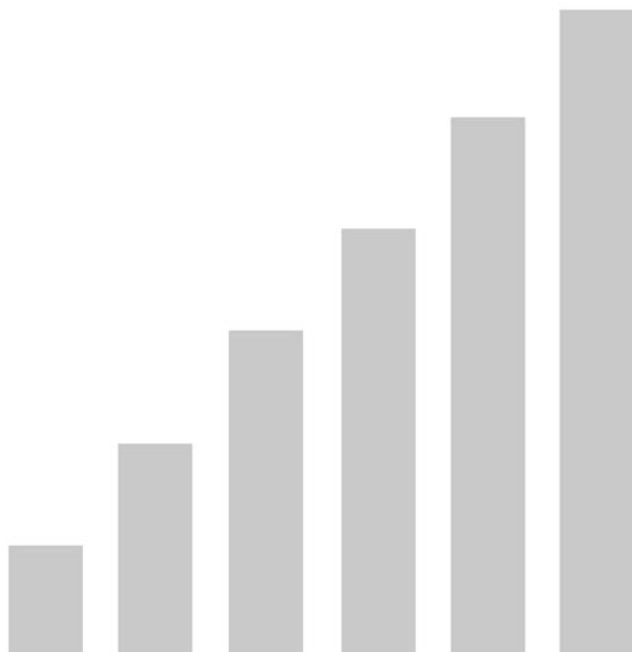


STATE OF THE TRIBE

TRASH MOUNTAIN PROJECT 2010 ANNUAL REPORT

JUNE 2010 - MAY 2011



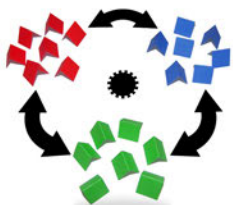
2010 Quick Look



GREW. The economy is in bad shape, yet we grew by 467% from 2009 to 2010.



EXPANDED. We began work in the Santiago, Dominican Republic dump community and have seen extensive growth and many lives changed.



DEVELOPED. There is not an available missions model for reaching the forgotten children of trash dump communities. In 2010 we were able to develop a model based on the Apostle Paul's missionary journeys with the work being done in the DR.

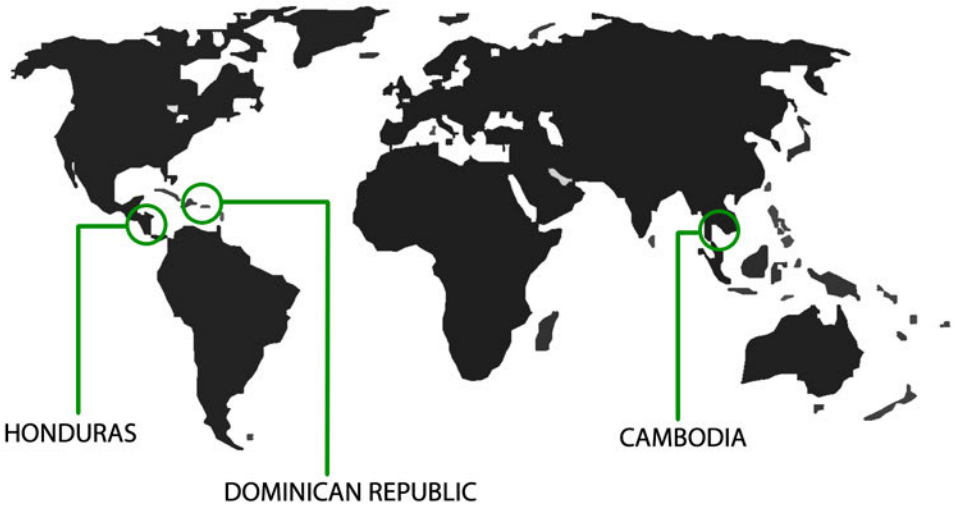


LAUNCHED. A new sponsorship program in the DR has revolutionized our ministry outreach to the students of Kids With a Hope Ministries. Over 300 kids are receiving nutritional food, Biblical education, health care and school supplies due to this new program.



HIRED. We hired our new Missions Director, expanded the staff in the DR to 13 and hired a new pastor for the Kids With a Hope community.

Where We Work



Why Dominican Republic?

After working in partnership with several other ministries in Honduras and Cambodia, God opened a door for TMP to shift its focus to the Dominican Republic. After completing the documentaries for our other two locations, help began pouring in, and we continue building homes as this is the biggest need requested from our local partners. Kids With a Hope is a Dominican-based ministry rescuing children from the Santiago city dump. When we met Pastor Pablo and this amazing ministry, they were just months away from closing their doors due to a lack of funding. We were moved by the extreme need and opportunity that God had presented to us, so we partnered with Kids With a Hope, and the results have been staggering!



Why Dump Communities?

EXPANSION

There are hundreds of trash dump communities around the world. We uncovered 157 dump communities after doing simple online research of each country throughout the world. We have also searched far and wide for any other ministries that focus entirely on trash dump communities; we finally found one, and they are working in three locations. We believe that God has been educating our team to reach the least, the lost and the forgotten people of trash dump communities worldwide. The long-term vision of this organization is to grow and expand to every location that God will lead us.

157 DUMP COMMUNITIES
THAT WE KNOW OF

2 ORGANIZATIONS
FOCUSED ON
THESE AREAS

1,000s
OF PEOPLE IN EACH COMMUNITY

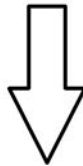


Covering Our Costs

100%

of all designated donations go directly to funding ministry projects in the field, meaning there are NO hidden administrative costs with any of our special projects.

So how do we keep the lights on?



BASECAMP



Webster's Dictionary defines Base Camp as: a main encampment providing supplies, shelter, and communications for persons engaged in wide-ranging activities.

Recently, we formed **BASECAMP**, a partnership program created to underwrite the operating costs of Trash Mountain Project. To support our growth, God has brought together a like-minded community of churches, individuals and businesses to fund our operating budget on an ongoing basis.

Just as the name implies, this base of support paves the way for us to continue doing the work that we believe God has uniquely called TMP to do around the world: to develop Christ-centered environments for children and families living in trash dump communities worldwide.

2010 Finished Projects

100% of all designated donations go directly to funding ministry projects in the field. We trace the dollars to the projects and let donors know where their money goes.



16 
New homes built


4 
New classrooms

550+
Bibles given out

15 
Dental professionals launched TMP dental care program

279 
Kids Sponsored

13 
Indigenous missionary staff members hired

160 
Pairs of glasses distributed at the optometry clinic

URGENT TMP NEEDS

Technical School/Health Clinic

// Total Project Cost	\$162,000
// Completed	\$36,517
// Needed	\$125,483

Ministry Vehicle

\$13,000 or a 4x4 truck less than 5 years old donated as a gift in kind to be.

UPCOMING PROJECT NEEDS

// Diesel Generator for main DR school campus	\$9,500
// Aquaponics	\$28,850
// Elderly Care Facility	\$94,300
// Staff and Emergency Housing Facility	\$89,500
// Location #4 Start-Up Fund	\$25,000

Other 2011 HIGHLIGHTS

- + A new kitchen was donated to Kids with a Hope
- + Launched General Health Care program
- + Launched nutritional program
- + HUNDREDS of kids kept off the dump
- + 1 new pastor hired in the DR
- + New TMP website launched

TMP Partnerships

CHURCH/SCHOOL PARTNERS

Access Church – Lakeland, Florida
Bethlehem Baptist Church – Richmond, Virginia
Cair Paravel Latin School – Topeka, Kansas
Central Assemblies of God Church – Houston, Pennsylvania
Crossroads Community Church – Winter Haven, Florida
Fellowship Bible Church – Topeka, Kansas
Fellowship of Christian Cowboys – Lakeland, Florida
First United Methodist Church – Madison, Florida
Journey Church – Topeka, Kansas
Lakeland Christian School – Lakeland, Florida
Lighthouse Bible Church – Topeka, Kansas
Meadowbrook Church – Ocala, Florida
New Life Baptist – Auburndale, Florida
New Life Church – Canonsburg, Pennsylvania
Oasis Community Church – Lakeland, Florida
Ridgepoint Church – Winter Haven, Florida
Samford University – Birmingham, Alabama
Sonrise Christian School – Lakeland, Florida
Southeastern University – Lakeland, Florida
Topeka Bible Church – Topeka, Kansas
Winter Haven Christian School – Winter Haven, Florida



6
Schools &
Universities

13
Churches

435
Individuals

INNOVATIVE SOCIAL ENTREPRENEURS



+

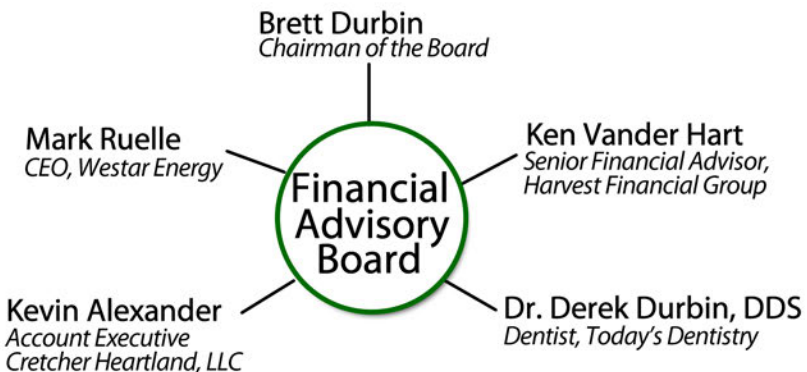
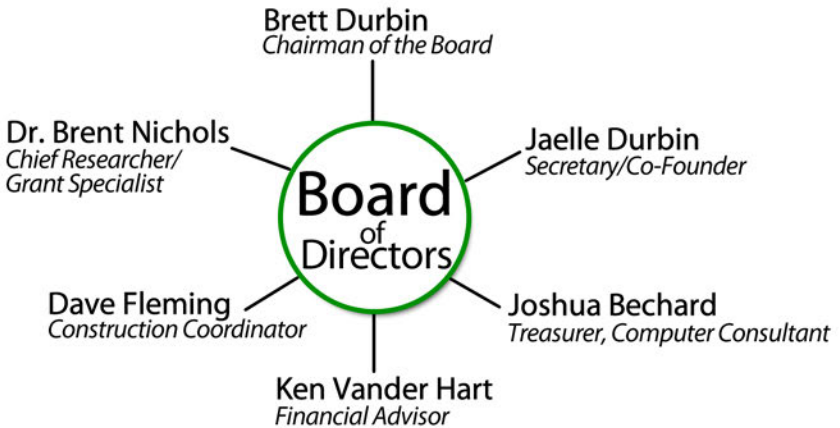
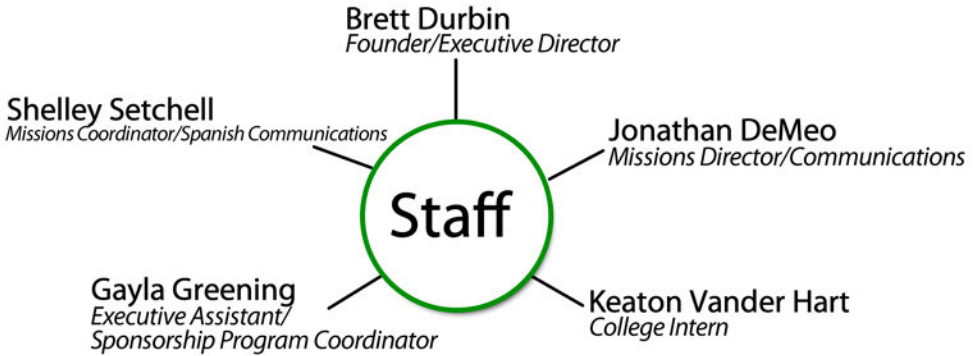


=

50 } { 50
your cup. their hope.

Blue Jazz Java is a Kingdom-focused company that is not afraid to tackle big goals on behalf of the work that God is doing through Trash Mountain Project. Our partner in coffee donates between 25 – 50% of profits from sales of their coffee in retail and online sales! 100% of the money raised through this aggressive business strategy goes to sponsor children in the DR.

Our Team



Consolidated Statement of Activities

TRASH MOUNTAIN PROJECT, INC.

Profit & Loss

June 2010 through May 2011

Jun '10 - May 11 2010 2009

Ordinary Income/Expense

Income

Stock Income 71,587.09

Income 605,774.72

Total Income

677,361.81

145,152.24

Gross Profit

677,361.81

144,352.24

Expense

Repairs & Maintenance 297.66

Marketing 1,179.61

Fundraising 0.00

TMP Program Service 449,396.53

Government fees 203.10

Travel and Meetings 4,084.11

TMP Office Expenses 117,878.75

Legal & Professional Fees 10,099.75

Contract Labor 358.99

Insurance 44.32

Total Expense

583,542.82

115,631.23

Net Ordinary Income

93,818.99

28,721.01

Other Income/Expense

Other Income

Security Sale Proceeds 71,353.13

Interest Income 38.46

Total Other Income

71,391.59

138.28

Other Expense

Basis in Securities Sold 71,587.09

Total Other Expense

71,587.09

Net Other Income

-195.50

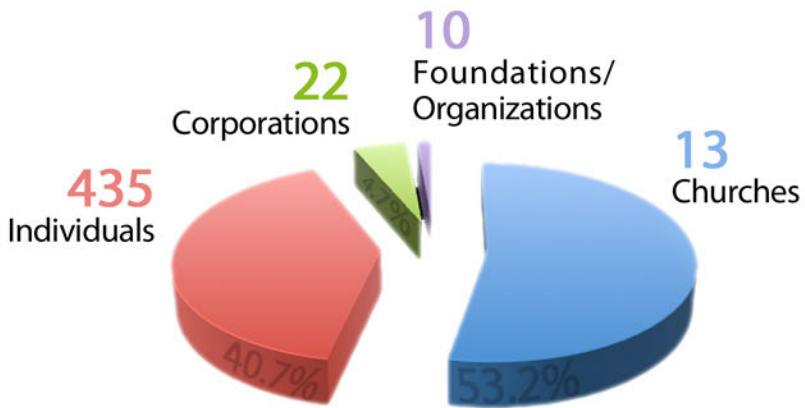
Net Income

93,623.49

28,859.29

The Source

More than half of what we raised in 2010 came from TMP church partners. This is an exciting fact for our ministry, as we believe that the local church is the foundation of what God is doing in missions around the world. In 2010, we had hundreds of new individuals, businesses, foundations and organizations join the mission. Here is the breakdown of where our total support came from in 2010.

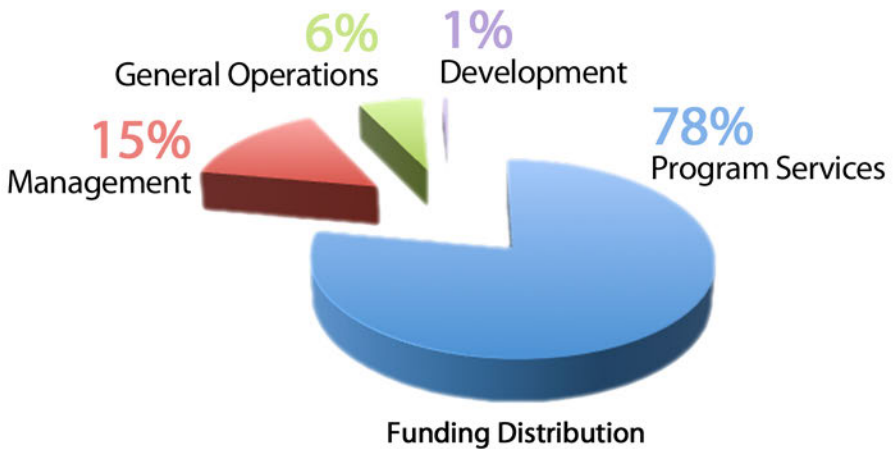


Support Base Breakdown



The Distribution

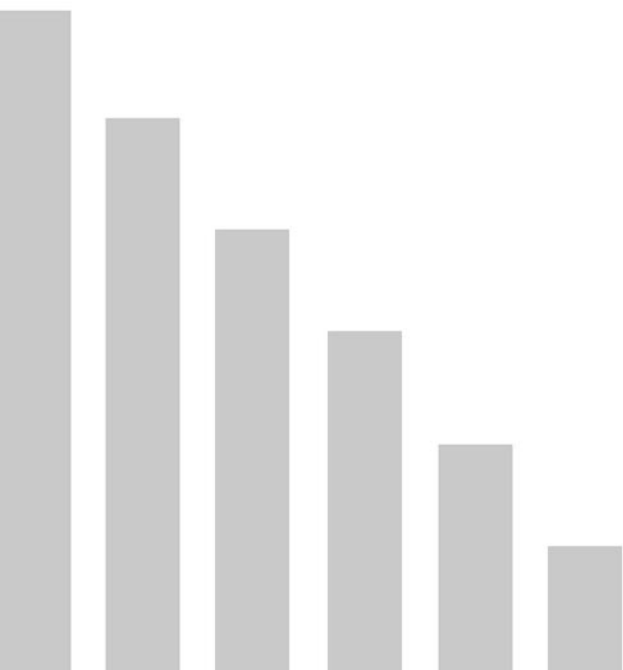
In 2010, our second year in existence as a ministry, Trash Mountain Project experienced a financial increase of 467% from 2009! God has chosen to grow this ministry at a very rapid rate, and we are honored to share how our Board and staff have used the funds He has provided. Financial accountability and transparency have always been a high priority for TMP, and the chart below illustrates a general breakdown of how funding was used throughout 2010 based on our total income of \$677,361.81.



STATE OF THE TRIBE

TRASH MOUNTAIN PROJECT INC. 2010 ANNUAL REPORT

3601 SW 29TH ST. SUITE 118-B | TOPEKA, KS 66614
INFO@TRASHMOUNTAIN.COM | 863.248.2931
WWW.TRASHMOUNTAIN.COM



TRASH
MOUNTAIN
PROJECT

live the command